

ADEL EL SIWI  
THE FACE AND BEYOND



ARTSPACE

## ABOUT ARTSPACE

Founded in 2003, ARTSPACE Dubai is dedicated to the promotion of contemporary Middle Eastern Art and Artists. ARTSPACE caters to the tastes and trends of the sophisticated Dubai art scene and the gallery's discerning worldwide collector base. Its global clientele includes private collectors, art consultants, corporate art consultants, architects, interior designers as well as corporations, government, diplomatic and social VIPs. In addition to hosting a series of diverse and regular highly acclaimed exhibitions, ARTSPACE also provides consulting for art investors as well as

offering corporate art services to the business community. Local partnerships with internationally renowned art houses and auction establishments have helped push ARTSPACE to the forefront of the market. ARTSPACE offers distinctive and unrivaled services to its clients and artists.

The gallery has participated in several local and international art fairs and collaborated with numerous iconic art institutions. It continues to be one of the art world's leading platforms for contemporary Middle Eastern art. 2013 marks ARTSPACE's monumental 10<sup>th</sup> anniversary.



## ADEL EL SIWI

Adel El Siwi born in 1952 in Behera, Egypt. He studied medicine at Cairo University between 1970 and 1976, but simultaneously indulged in independent study at the Faculty of Fine Arts between 1974 and 1975. In 1980 he relocated to Milan in Italy, where he lived and worked for a decade before moving back to Cairo, where he continues to live and work.

El Siwi has had numerous solo shows at venues including Mashrabia Gallery of Contemporary Art, Cairo (1988, 1990, 1992, 1993, 1995, 2006); Epreuve d'Artiste, Beirut (1993); Accademia d'Egitto, Rome (1996); Ammar Farhat, Tunis (2003); Al Riwaq, Manama (2003); Atassy Gallery, Damascus (2004); French Cultural Center, Alexandria (2005); Artspace, Dubai (2007, 2012); Mahmoud Khalil Museum, Cairo (2010); Galerie Inception, Paris (2012). Artspace London (2013)

He has participated in the Cairo Biennale (1996, 2008), the Sharjah Biennial (1997), and the Venice Biennale (2009). His work has been included in a number of group exhibitions, among them Rencontres Africaines, Institut du Monde Arabe, Paris (1994); Modernities and Memories, Venice Biennale, (1997); Transafrican Art, Orlando Museum, Miami, (2000); Word into Art: Artists of the Modern Middle East, (organized by the British Museum), Dubai (2008); Oum Kalsoum: La quatrième pyramide, IMA, Paris (2008); ItaliaArabia, Chelsea Art Museum, New York (2008).

He was invited by “Le Laboratoire: Sculpture urbaine” to project his work onto historical buildings in Rio de Janeiro, Brazil (1996), Grenoble, France (2000), Alger, Algeria, (2003).

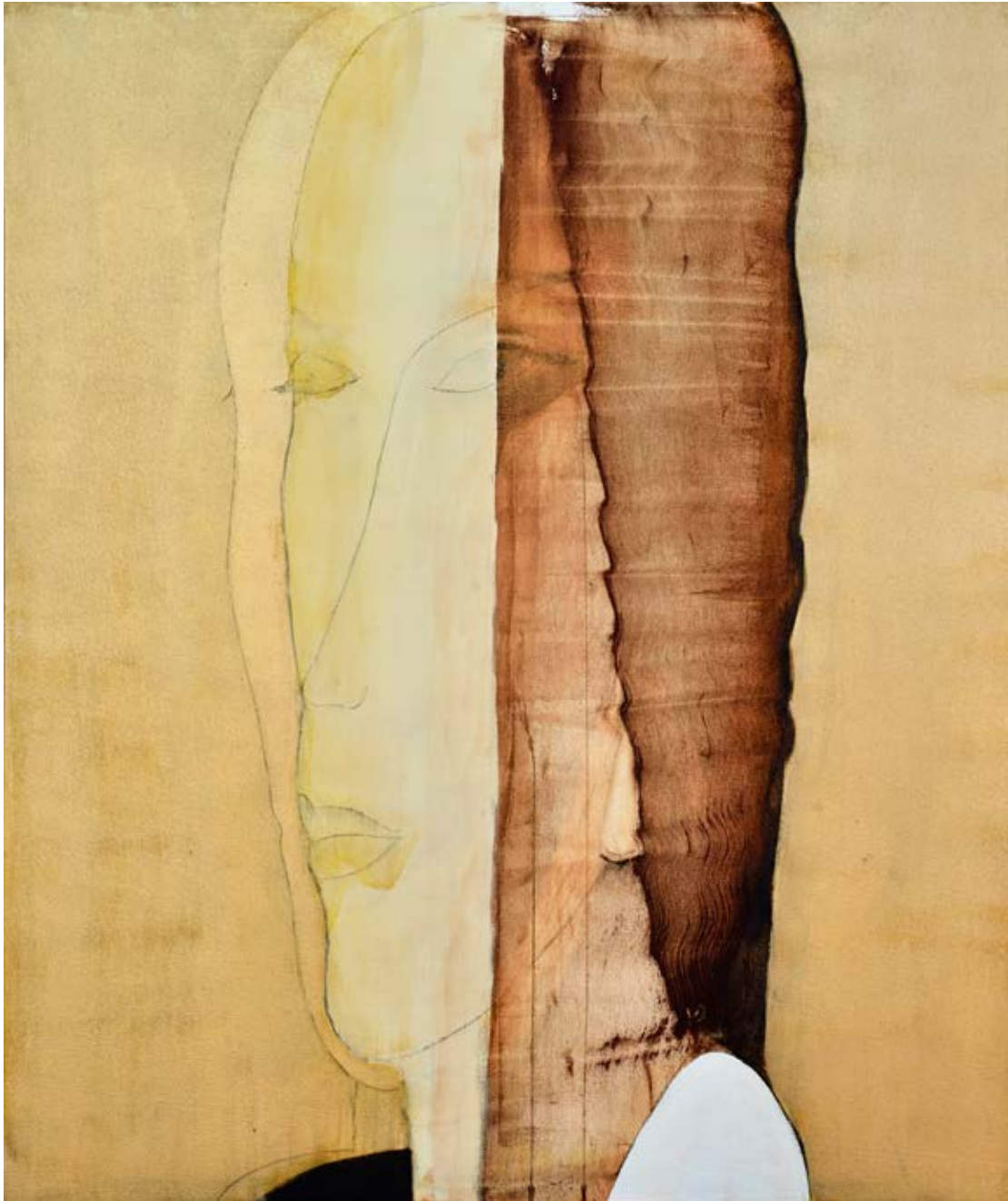
In addition to his career as a visual artist, El Siwi has translated numerous art historical texts into Arabic by artists such as Leonardo da Vinci and Paul Klee.

In *The Face and Beyond*, Siwi is re-visiting his signature face as well as incorporating the figure as the central issue, using this composition as a field or a space that contains its own visual narrative within. The viewer is invited to look into the works and see the face and figure, or go even further beyond and look at the works as a starting point of where things happen.





**African Beauty 1 / 2012**  
240 x 122



---

**The Invisible / 2014**  
120 x 140 cm



---

**Being there 1 / 2016**  
157 x 187 cm



---

Being there 2 / 2016  
157 x 187



---

**Green Sufi Singer / 2014**  
220 X 149 cm





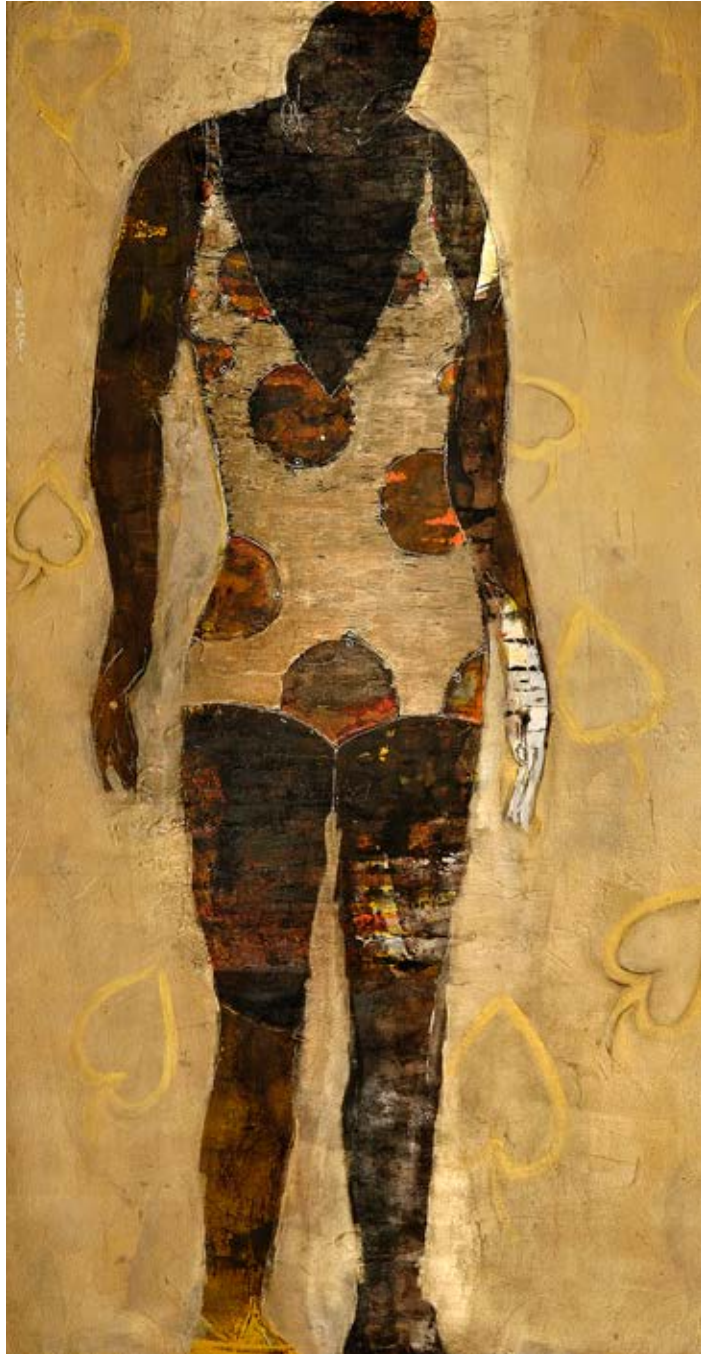
---

**Red Sufi Singer / 2014**  
220 X 149 cm



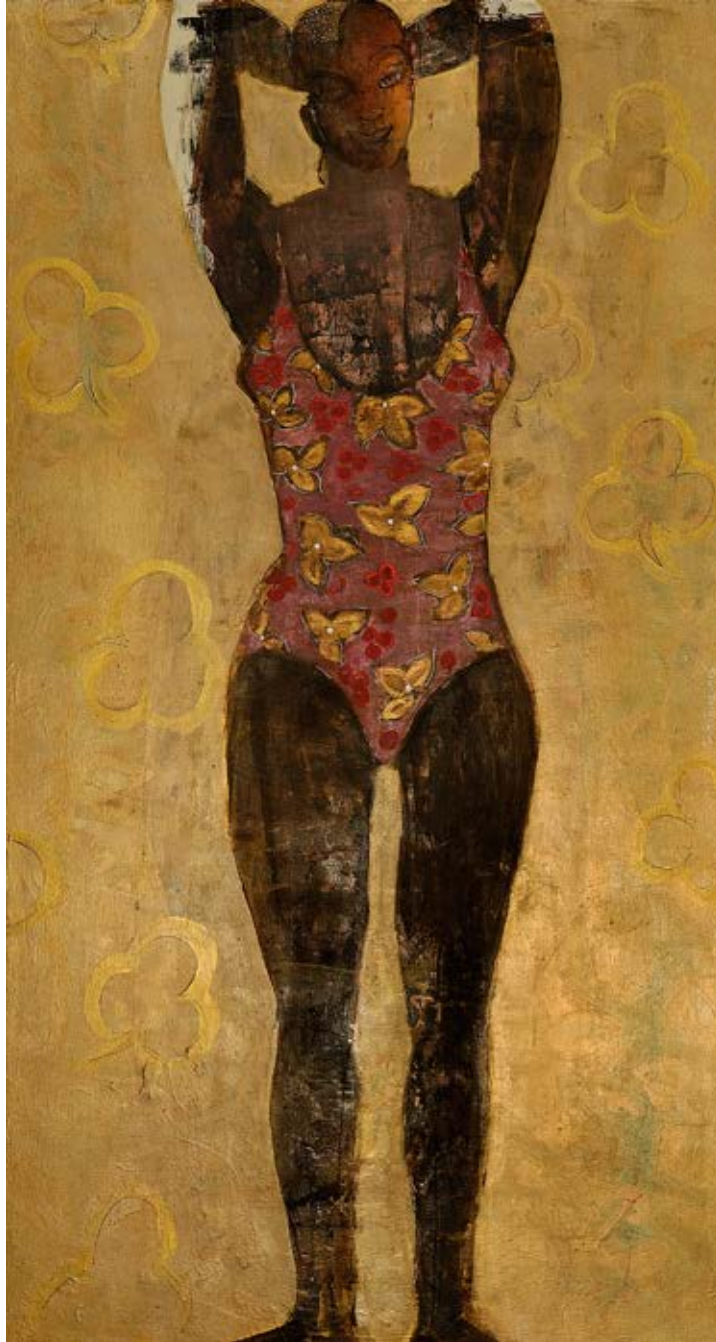
---

**Girl with a Flower in Mouth / 2016**  
120 x 140



---

**African Beauty 2 / 2012**  
240 x 122



---

**African Beauty 3 / 2012**  
240 x 122



---

**Blue Earrings / 2013**  
100 x 70



---

**Thinking Face / 2011**  
100 x 70



---

**Untitled (Panel 3) 2013**  
220 x 170

# ARTSPACE

THE GATE VILLAGE BLDG. 3, LEVEL 2,  
DUBAI INTERNATIONAL FINANCIAL CENTRE  
TEL. +971 (4) 323 0820 | FAX: +971 (4) 323 0821  
INFO@ARTSPACE-DUBAI.COM | WWW.ARTSPACE-DUBAI.COM